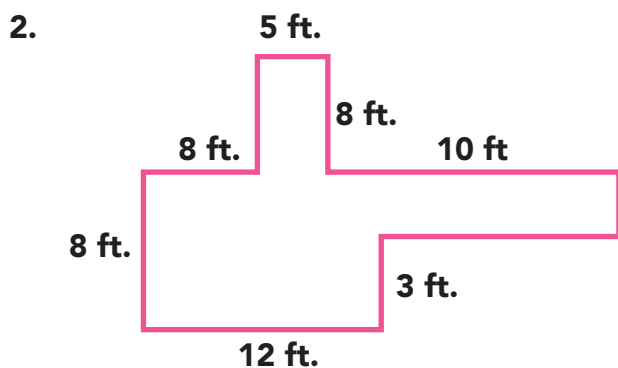
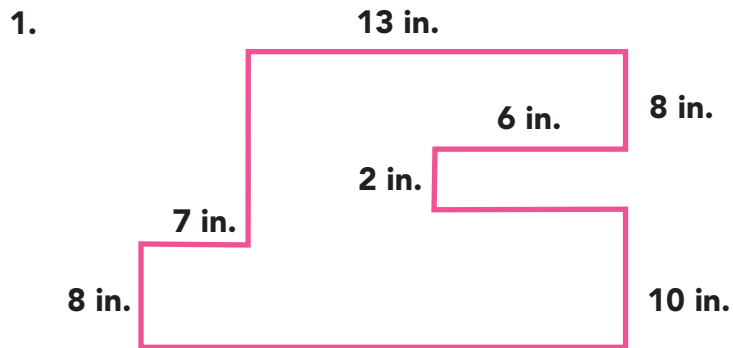


Objective Surface Area of Rectangular Prisms and Pyramids

Warm-Up

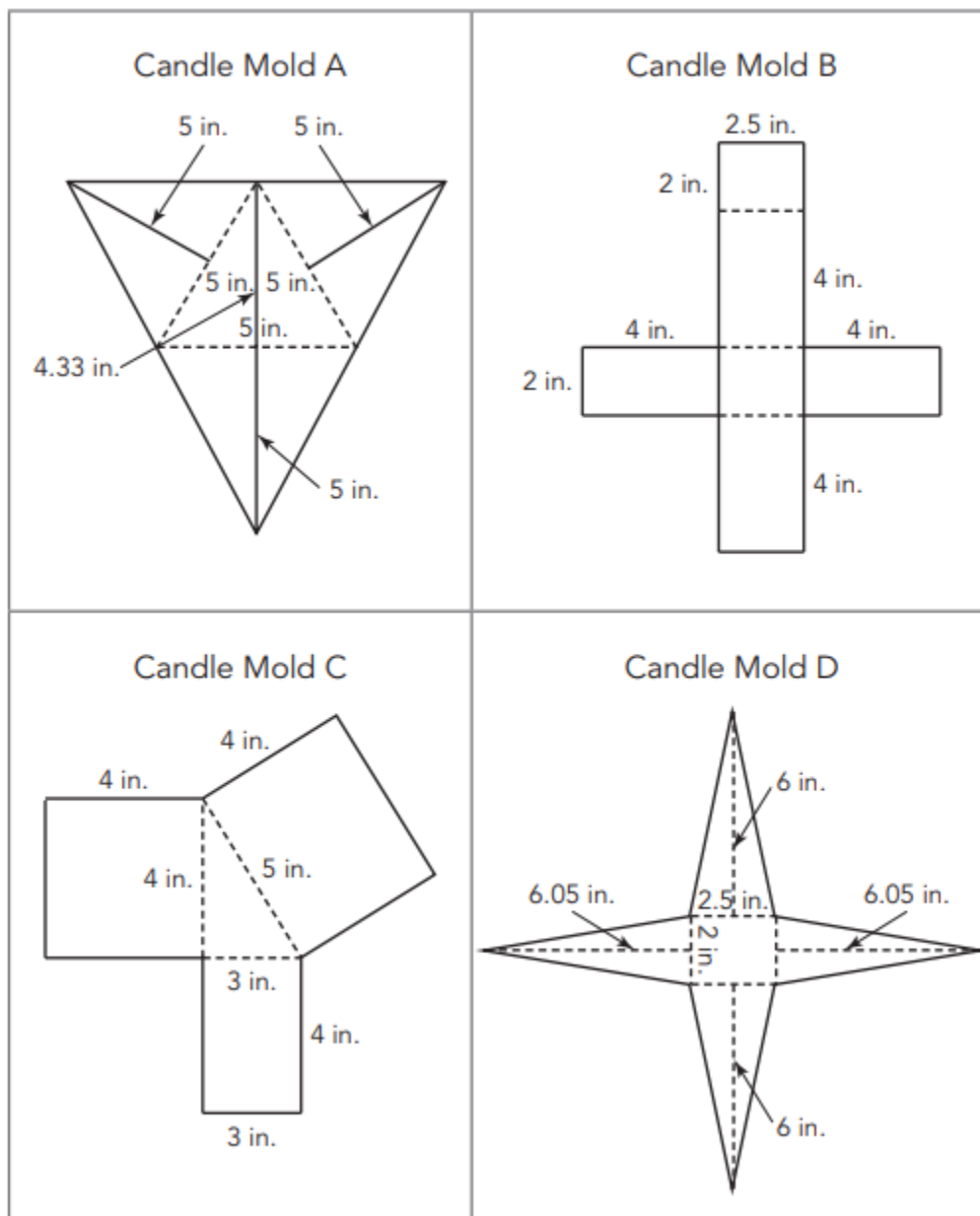


Calculate the area of each composite figure.





Scents-R-Us produces candles in a variety of shapes. To produce each candle, the company first creates a mold, and then pours hot wax into the mold. When the hot wax cools and solidifies, the mold is removed.



1. Classify the shape of each candle based on the candle mold.

a. Candle Mold A

b. Candle Mold B

c. Candle Mold C

d. Candle Mold D

2. Use each candle mold to answer each question.

a. Calculate the surface area of each candle.

b. How could Scents-R-Us use the surface area of the candles to determine how to price each candle?

**Show You  
KNOW**

Volume or Area?

1. A rectangular prism has a height of 6 feet, a length of 7.5 feet, and a width of 5 feet.

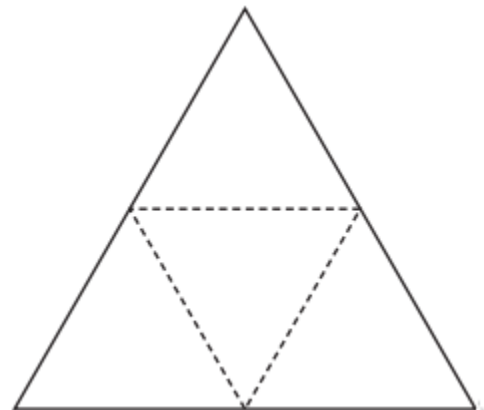
a. Draw a net of the rectangular prism and label its measurements.

b. Calculate the surface area of the prism.

2. Consider the net of the triangular pyramid shown. The net is composed of 4 equilateral triangles, each with a side length of 4 meters and a height of approximately 3.5 meters.

a. Label the pyramid with its measurements.

b. Calculate the surface area of the pyramid.





## LESSON 3.3c Breaking the Fourth Wall

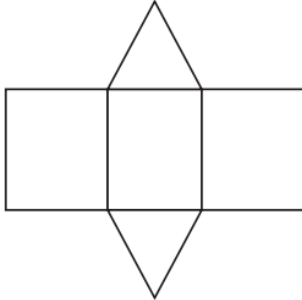


**Objective** Surface Area of Rectangular Prisms and Pyramids

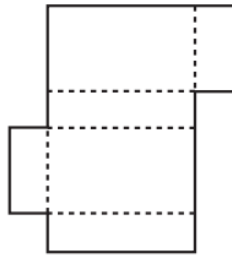
### Practice

1. Name the solid figure formed by each net.

a.

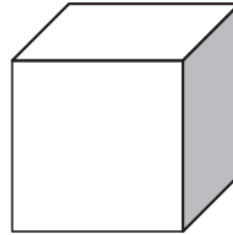


b.

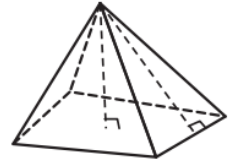


2. Draw a net that will form each solid figure.

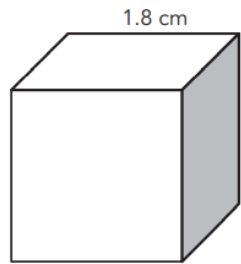
a.



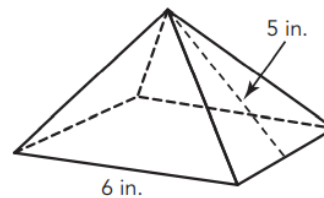
b.



3. Calculate the surface area of the cube.



4. The pyramid shown has a square base and congruent triangular faces. Calculate the surface area of the pyramid.



5. Estimate and then calculate the surface area of a rectangular prism with a length of 9.06 ft, a width of 4.11 ft, and a height of 6.2 ft.

